

# RapidClean

National Supply Solutions

NATIONAL STRENGTH - LOCAL SERVICE



## PRODUCT CATALOGUE

Cleaning Supplies and Equipment



### ONE-STOP-SHOP

TOTAL CLEANING SUPPLIES SOLUTION

MARCH  
2023



# RapidClean

National Supply Solutions  
NATIONAL STRENGTH - LOCAL SERVICE



OVER 70  
STORES



ONE-STOP  
SHOP



## ABOUT US

RapidClean is an Australian & New Zealand owned national company with over 70 independently owned stores. RapidClean has been trading for over 30 years and has a collective turnover exceeding \$100 million per year, employs more than 150 people and has over 100 delivery vehicles.

Our business is made up of cleaning supply experts operating their own stores. Our aim is to provide our customers with the support of a national organisation while providing a local service, single source, cost effective one-stop-shop solution.

Our stores stock major brands of industrial, commercial and environmentally friendly cleaning and packaging products. We select only the best suppliers and products and we stand by the quality of the products we stock. Our collective buying power gives us the ability to offer our customers quality products at the best prices.

## WHY CHOOSE US?

- ✓ Established for over **30 years** and have an experienced, knowledgeable team
- ✓ We have over **70 stores** in Australia & New Zealand and can supply nationally
- ✓ Our stores are owned by **locals** and you have direct contact with the store owner
- ✓ We are **Australian & New Zealand owned** and all profits stay in Australia & New Zealand
- ✓ We have a **huge range** of cleaning, catering, packaging & safety supplies
- ✓ We **sell and service** cleaning equipment
- ✓ We offer **National Accounts** for large customers
- ✓ Our products are **commercial** quality
- ✓ We have **huge buying power** which enables us to pass on the savings to our customers



The Rapid Group is proud to be the only Australian associate member of INPACS - Global Supply Solution with an annual turnover exceeding \$2.4 Billion. The benefits for our customers is that they can have confidence RapidClean will maintain consistent supply of the best cleaning and packaging products available anywhere in the world at competitive prices.





## OUR PRODUCTS



### CLEANING PRODUCTS

For commercial and industrial use in kitchens, bathrooms, laundries and public areas. Heavy duty degreasers through to environmentally friendly products.



### CLEANING ACCESSORIES

Mops, buckets, brooms, trolleys, gloves, signs, scourers, brushware, garbage bins, cleaning cloths and vacuum bags.



### CLEANING MACHINERY

Pressure washers, floor scrubbers, vacuum cleaners, floor polishers sweepers and carpet extractors.



### RAPIDCLEAN 'GREEN'

Environmentally friendly cleaning products for kitchens, housekeeping and personal care.



### PAPER PRODUCTS

Toilet tissue, hand towels, facial tissue, serviettes, napkins and commercial quality dispensers.



### WASHROOM HYGIENE

Hand soaps, body wash, foam soaps, sanitisers, dispensers, urinal screens and hand dryers.



### GUEST AMENITIES

Hotel products, laundry and dishwashing sachets, dispensers, coffee, tea, hot chocolate, sugar and milk.



### PACKAGING SUPPLIES

Bin liners, gloves, garbage bags and carry bags.



### CATERING SUPPLIES

Cups, plates, containers, disposable tableware, food wraps, cutlery, film, foil and snack boxes.



### SAFETY PRODUCTS

Protective clothing, freezer wear, respiratory, eye and hearing protection and hard hats.



## PAPER PRODUCTS

# PAPER PRODUCTS

## HAND TOWELS AND DISPENSERS

### INTERLEAVED TOWELS AND DISPENSERS

RapidClean hand towel paper offers innovation with its wet strength technology, that performs to the highest level. The range begins with economical Ultraslim hand towel, progressing to the premium technology 'Point-to-Point' (P2P) paper, delivering the highest level of performance. P2P is an innovative manufacturing process that delivers extreme strength and performance when required.

### ROLL TOWELS AND DISPENSERS

RapidClean roll towel paper is unique, yet universal in its design. The Roll Towel paper is made from the highest quality wood pulp fibres and from sustainable supply sources. When you require high absorbency and wet strength performance for drying hands or cleaning surfaces, RapidClean roll towels deliver every time. RapidClean's exclusive innovative Autocut hand towel dispensing system, offers the control point you need to deliver quality washrooms in working environments with its guaranteed single sheet dispensing. RapidClean roll towel paper is Australian made and owned.

## TOILET TISSUE AND DISPENSERS

RapidClean toilet tissue is designed to offer superior strength without loss of comfort. Not all toilet tissue is the same, so when you require quality and performance with no washroom mess, RapidClean toilet tissue delivers the experience you need. Financial and environmental concerns are infused in the design process, to ensure a functional and cost effective product. Innovative dispensing systems control the excess waste of toilet tissue in the washroom, while enhancing the decor and presentation. The Deluxe 2 ply or 1 ply toilet tissue is suitable for all commercial requirements. RapidClean toilet tissue is Australian made and owned.

## ENTICE PAPER

The ideal solution for all high traffic washrooms, RapidClean Entice paper delivers premium quality in a cost effective manner. Unlike most other paper on the market, the RapidClean Entice range does not sacrifice quality to save on cost. Designed for use in commercial areas including shopping centres, public restrooms and restaurants.



### ACCREDITATIONS

**OH&S standards** (OHS) accreditation shows our commitment to delivering Occupational Health and Safety for our employees and customers.



**Quality Assurance Standards (QAS)** accreditation shows our commitment to delivering quality products and services to our customers.



**Environmental Management System (EMS)** is a structured system or management tool designed to help an organisation to reduce its negative impacts on the environment and improve its environmental performance.



## IMAGE DELUXE TOILET TISSUE ROLL

400 OR 700 SHEET TOILET ROLLS & DISPENSER



Toilet Roll Code: 077560



### DESCRIPTION

- 2 Ply (400 sheets)
- 11 cm x 10cm sheet
- 48 Rolls per carton
- Australian Made and Owned
- Individually wrapped toilet rolls
- Deluxe toilet tissue
- Large embossed sheets
- Soft with superior strength



White: 033040 / Black: 033050



Toilet Roll Code: 077525



### DESCRIPTION

- 2 Ply (700 sheets)
- 11 cm x 10cm sheet
- 48 Rolls per carton
- Australian Made and Owned
- Individually wrapped toilet rolls
- Deluxe toilet tissue
- Large sheets with embossed edges
- Soft with superior strength



White: 033040 / Black: 033050

## JUMBO TOILET TISSUE ROLL

300 OR 600 METRE TOILET ROLLS & DISPENSER



Toilet Roll Code: 077540

### DESCRIPTION

- 2 Ply (300 metres)
- 90mm x 300m roll
- 8 Rolls per carton
- Australian Made and Owned
- Superior strength
- Ideal for high traffic areas
- Economical



White: 033047 / Black: 033057



Toilet Roll Code: 077550

### DESCRIPTION

- 1 Ply (600 metres)
- 90mm x 600m roll
- 8 Rolls per carton
- Australian Made and Owned
- Superior strength
- Ideal for high traffic areas
- Economical



White: 033047 / Black: 033057

## LITTLE JUMBO TOILET TISSUE ROLL

120 OR 360 METRE TOILET ROLLS & DISPENSER



2Ply: 077562 1Ply: 077561

### DESCRIPTION

- 2 Ply (120 metres) 077562
- 1Ply (360 metres) 077561
- 90mm roll width
- 18 Rolls per carton
- Australian Made and Owned
- 100% virgin soft toilet tissue
- Superior strength with comfort
- High traffic bathroom environments
- Superior breakdown & suitable for all sewer systems
- PEFC Certified



White: 033040 / Black: 033050

## TOWELEX ULTRASLIM HAND TOWEL

2400 SHEET HAND TOWEL & DISPENSER



Paper Towel Code: 077530 **towelX**

### DESCRIPTION

- 2 Ply (2400 sheets)
- 24cm x 24cm sheet
- Australian Owned
- 'Point-to-point' high quality paper
- Leaf embossed sheets
- Ideal for high traffic areas



White: 033042 / Black: 033052

## DELUXE ULTRASLIM HAND TOWEL

2000 SHEET HAND TOWEL & DISPENSER



Paper Towel Code: 077095

### DESCRIPTION

- 2 Ply (2000 sheets)
- 23.5cm x 31cm sheet
- Australian Owned
- 'Point-to-point' high quality paper
- Superior strength
- Soft luxurious sheets



White: 033042 / Black: 033052

## SLIMLINE HAND TOWEL

4000 SHEET HAND TOWEL & DISPENSER



Paper Towel Code: 087535

### DESCRIPTION

- 2 Ply (4000 sheets)
- 23cm x 21cm sheet
- Australian Owned
- 'Point-to-point' high quality paper
- Superior strength
- Ideal for high traffic areas



White: 033042 / Black: 033052

## COMPACT HAND TOWEL

2400 SHEET HAND TOWEL & DISPENSER



Paper Towel Code: 077580

### DESCRIPTION

- 2 Ply (2400 sheets)
- 19.5cm x 26cm sheet
- Australian Owned
- 'Point-to-point' high quality paper
- Superior strength
- Soft luxurious sheets



White: 033043 / Black: 033053

## CENTRE PULL HAND TOWEL

300 METRE PAPER TOWEL & DISPENSER



Paper Roll Code: 077520

### DESCRIPTION

- 1 Ply, 20cm x 75cm sheet average (1600 sheets)
- 200mm x 300m roll
- 4 Rolls per carton
- Australian Made and Owned
- High quality paper
- Superior strength
- Economical



White: 033044 / Black: 033054

**AUTOCUT HAND TOWEL**

**120 & 200M HAND TOWEL & DISPENSERS**



Paper Roll Code: 077515

Paper Roll Code: 077513



**MINI**

- 1 Ply, 20cm x 23cm sheet
- 3130 sheets
- 200mm x 120m roll
- 6 Rolls per carton
- Australian Made and Owned
- High quality paper
- Exclusive controlled dispenser system
- Economical and environmentally friendly

**LARGE**

- 1 Ply, 20cm x 23cm sheet
- 5,200 sheets
- 200mm x 200m roll
- 6 Rolls per carton
- Australian Made and Owned
- High quality paper
- Exclusive controlled dispenser system
- Economical and environmentally friendly



White: 033049  
Black: 033059



White: 033411  
Black: 033511

**AUTOCUT ECO HAND TOWEL**

**300 METRE ROLL TOWEL & DISPENSER**



Paper Roll Code: 077924 - White



**DESCRIPTION**

- 1 Ply, 20cm x 23cm sheet (5,200 sheets)
- 200mm x 300m roll
- 4 Rolls per carton
- Australian Made and Owned
- High quality paper
- Exclusive controlled dispenser system
- Economical and environmentally friendly



White: 033411 / Black: 033511

**ROLL HAND TOWEL**

**80 OR 100 METRE ROLL TOWELS & DISPENSER**



Paper Roll Code: 077500

Paper Roll Code: 077510

**80M**

- 1 Ply, 18cm x 75cm
- Sheet average (1706 sheets)
- 180mm x 80m roll
- 16 Rolls per carton
- Australian Made and Owned
- Superior strength
- Ideal for high traffic areas
- Fits all dispensers on the market

**100M**

- 1 Ply, 18cm x 75cm
- Sheet average (2133 sheets)
- 180mm x 100m roll
- 16 Rolls per carton
- Australian Made and Owned
- Superior strength
- Ideal for high traffic areas
- Fits all dispensers on the market



White: 033036

**MULTI-PURPOSE ROLL TOWEL**

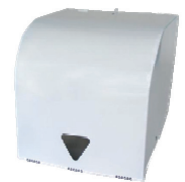
**80 METRE TOILET ROLLS & DISPENSER**



Paper Roll Code: 077501

**DESCRIPTION**

- 2 Ply, Point to Point technology
- 180mm x 80m roll
- 16 Rolls per carton
- Australian Made and Owned
- Quality multipurpose hand towel for all applications
- Highly absorbent and fits all dispensers on the market



White: 033036

**IMAGE FACIAL TISSUE BOX**

**100 SHEETS FACIAL TISSUE BOX**



Facial Tissue Code: 081130

**DESCRIPTION**

- 2 Ply, 100 sheets
- 19cm x 19cm sheet
- 48 Packs per carton
- Australian Made and Owned
- Soft with superior strength



ENTICE TOILET TISSUE ROLL

400 OR 700 SHEET TOILET ROLLS & DISPENSER



Toilet Roll Code: 000400



Toilet Roll Code: 000700

DESCRIPTION

- 2 Ply (400 sheets)
- 9.5cm x 10cm sheet
- 48 Rolls per carton
- Embossed Virgin Paper
- Individually wrapped toilet rolls
- Economy toilet tissue
- Soft with superior strength



DESCRIPTION

- 2 Ply (700 sheets)
- 9.5cm x 10cm sheet
- 48 Rolls per carton
- Embossed Virgin Paper
- Individually wrapped toilet rolls
- Economy toilet tissue
- Soft with superior strength



ENTICE JUMBO TOILET TISSUE ROLL

300 OR 500 METRE TOILET ROLLS & DISPENSER



Toilet Roll Code: 000549

DESCRIPTION

- 2 Ply (300 metres)
- 9.5cm x 300m roll
- 8 Rolls per carton
- 100% virgin soft toilet tissue
- Superior strength and comfort
- Ideal for high traffic areas
- Economical
- Superior breakdown, great for all sewer systems



White: 033047 / Black: 033057

ENTICE FACIAL TISSUES

80 METRE ROLL TOWEL & DISPENSER



Paper Code: 000420

DESCRIPTION

- 2 Ply
- 100 Sheets
- 20cm x 19cm
- 48 Boxes per Carton
- Virgin paper Facial Tissues
- Tear out opening with dust shield





**ENTICE ULTRASLIM HAND TOWEL**

**2400 SHEET HAND TOWEL & DISPENSER**



Paper Towel Code: 000470

**DESCRIPTION**

- 1 Ply, 2400 sheets
- Embossed Premium White Paper
- 24cm x 25cm sheet
- 16 Packs per carton
- 150 sheets per pack
- Ideal for high traffic areas



White: 033042 / Black: 033052

**ENTICE SLIMLINE HAND TOWEL**

**4000 SHEET HAND TOWEL & DISPENSER**



Paper Towel Code: 000460

**DESCRIPTION**

- 1 Ply, 4000 sheets
- Embossed Premium White Paper
- 23cm x 23cm sheet
- 16 Packs per carton
- 250 sheets per pack
- Superior strength
- Ideal for high traffic areas



White: 033042 / Black: 033052

**ENTICE COMPACT HAND TOWEL**

**2400 SHEET HAND TOWEL & DISPENSER**



Paper Code: 000450

**DESCRIPTION**

- 1 Ply 2400 sheets
- 19.5cm x 25cm Sheets
- 16 Packs per carton
- 150 sheets per pack
- Virgin paper Towel
- Commercially Soft with integrity Format



White: 033043 / Black: 033053

**ENTICE ROLL HAND TOWEL**

**80 METRE ROLL TOWEL & DISPENSER**



Paper Roll Code: 000080

**DESCRIPTION**

- 1 Ply
- 18cm x 80m roll
- 16 Rolls per carton
- Embossed Premium White Paper
- Superior strength
- Ideal for high traffic areas
- Fits all dispensers on the market



White: 033036



## CLEANING SOLUTIONS

# CLEANING SOLUTIONS

## CLEANING RANGE AND SERVICES

RapidClean's range of cleaning and sanitising products are supported by a complete package of educational material including safety data sheets, product information sheets, risk assessment sheets, wall charts, training manuals and online training courses. Our range includes multi-purpose cleaning products for commercial and home use, from heavy duty to citrus-based biodegradable and ecologically approved products by the **Recognised Program**. The range has a colour coded alpha numeric identification system and screen printed bottles to maximise occupational health and safety. The products are packaged in cartons 3 x 5L and 15L pack sizes, to improve the safety of storage and handling.

## SAFE FOR FOOD PREPARATION AREAS

RapidClean's chemical labels clearly display our Safe for food preparation logos on all products suitable for use in food areas.



Safe for food preparation areas

## ENVIRONMENTAL CREDENTIALS

**Recognised** – Environmental Credentials Scheme is a voluntary, multiple-criteria based, third-party accreditation scheme for commercial cleaning products, developed by industry body Accord.



## FREE ONLINE TRAINING Safe Chemical Handling Course

[WWW.RAPIDCLEAN.COM.AU](http://WWW.RAPIDCLEAN.COM.AU)



## HOUSEKEEPING AND GENERAL PURPOSE

Choose from a range of commercial-grade multi-purpose disinfectants, cleaners and sanitisers.

## KITCHEN

Heavy-duty cleaning products to clean, degrease and sanitise surfaces in the kitchen. Cleaning products to clean sinks, ovens, deep fryers, hoods, vents and benches.

## LAUNDRY

High quality laundry detergents and fabric softeners. Extremely effective for removing stains whilst being suitable for use with grey water systems and front/top loading washing machines.

## PERSONAL CARE

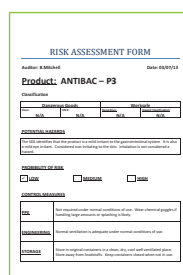
Hand wash and sanitising soaps, body wash and gels. We also offer manual and automatic soap dispensers.



Summary Wall Charts



Safety Data Sheet



Risk Assessment



Product Information Sheet



Individual Wall Charts

## HOUSEKEEPING & GENERAL PURPOSE

### DISINFECTANT - LEMON - H1



CODE	SIZE	DESCRIPTION
140700	500ml (Bottle only)	<b>LEMON FRESH</b> Is a commercial grade disinfectant with built-in detergent. It is formulated to clean and disinfect all hard surfaces and provide protection against germs and bacteria. It deodorises the room, leaving a pleasant lemon fragrance. Recommended for all washable hard surfaces such as floors and tiled walls in washrooms.
140300	5 Litre	
140310	15 Litre	



### DISINFECTANT - PINE - H2



CODE	SIZE	DESCRIPTION
140730	500ml (Bottle only)	<b>SPRUCE</b> Is a commercial grade disinfectant with built-in detergent. It is formulated to clean and disinfect all hard surfaces and provide protection against germs and bacteria. It deodorises the room, leaving a pleasant pine fragrance. Recommended for all washable hard surfaces such as floors and tiled walls in washrooms.
140320	5 Litre	
140330	15 Litre	



### GLASS CLEANER - H3



CODE	SIZE	DESCRIPTION
140750	500ml (Bottle only)	<b>REFLECTION</b> Is formulated to cut through dirt and grease on all surfaces. Spray Reflection Glass Cleaner onto a glass surface or window and wipe it off for a streak free shine. Recommended for glass, mirrors and hard surfaces including; counter tops, stainless steel, chrome, plastic, enamel, ceramic tile, vinyl, granite, porcelain, splash backs and melamine tabletops.
140340	5 Litre	
140350	15 Litre	

### WASHROOM CLEANER - H4



CODE	SIZE	DESCRIPTION
140355	1 Litre (Filled)	<b>HI-GENIC</b> Is a toilet, urinal and washroom cleaner formulated on safe acids and nonionic surfactants; a combination that has proven to be the least corrosive, yet still delivering excellent results. The regular use of Hi-Genic brightens stainless steel and porcelain surfaces.
140660	1 Litre (Bottle only)	
140360	5 Litre	
140370	15 Litre	



### GENERAL PURPOSE FLOOR CLEANER - H5



CODE	SIZE	DESCRIPTION
140380	5 Litre	<b>KLEEN ALL</b> Is a multi-purpose, mildly alkaline cleaner. The product dries streak-free and has a pleasant floral fragrance. Recommended for all washable hard surfaces including walls, floors (vinyl, ceramic, tiles, quarry tiles), vehicles and can be used through pressure washers.
140390	15 Litre	

## HOUSEKEEPING & GENERAL PURPOSE

### MULTI-PURPOSE SURFACE CLEANER - H6



CODE	SIZE	DESCRIPTION
140720	500ml (Bottle only)	<b>SPRAY 'N' WIPE</b> Is suitable for all hard surfaces including counter tops, stainless steel, chrome, plastic, enamel, ceramic tile, vinyl, granite, glass, porcelain plastic and melamine tabletops.
140400	5 Litre	
140410	15 Litre	

### DISINFECTANT - TUTTI FRUITI - H7



CODE	SIZE	DESCRIPTION
140740	500ml (Bottle only)	<b>TUTTI FRUITI</b> Is a commercial grade disinfectant with built-in detergent. It is formulated to clean and disinfect all hard surfaces and provide protection against germs and bacteria. It deodorises the room, leaving a pleasant tutti frutti fragrance. Recommended for all washable hard surfaces such as floors and tiled walls in washrooms.
140420	5 Litre	
140430	15 Litre	

### NEUTRAL LOW FOAMING DETERGENT - H8



CODE	SIZE	DESCRIPTION
140710	500ml (Bottle only)	<b>NEUTROL</b> Is a heavy duty highly concentrated, low foaming Detergent. It combines low foam detergency with soil suspending agents. Neutrol is suitable for use in auto scrubbers and pressure washers, with a mop and bucket or a spray and wipe. Recommended for use on floors, walls, benches, tiles and most other surfaces.
140440	5 Litre	
140450	15 Litre	

### DEODORISER & AIR FRESHENER - H9



CODE	SIZE	DESCRIPTION
140690	500ml (Bottle only)	<b>FLORAL</b> Is a dual action deodoriser and air freshener. It contains a broad spectrum bactericide and specially formulated floral perfume oils with high residual nature. This enables the product to sanitise and deodorise with a single application. Floral can be used as a spray and wipe or for light mopping.
140460	5 Litre	
140470	15 Litre	

### DETERGENT SANITISER (HEAVY DUTY) - H10



CODE	SIZE	DESCRIPTION
140680	500ml (Bottle only)	<b>ECOCLEAN</b> Is a heavy duty cleaner, sanitiser and disinfectant detergent with natural citrus solvents. Ecoclean is environmentally friendly and is an excellent floor cleaner and degreaser suitable for most hard surfaces.
140500	5 Litre	
140510	15 Litre	



**BLEACH 4% - H11**



CODE	SIZE	DESCRIPTION
140760	1 litre (Bottle only)	<b>BLEACH 4%</b> Is a chlorine activated bleach and sanitiser which may be used in a wide variety of cleaning and sanitising applications. It can also be used as a vegetable sanitiser in kitchen applications when diluted to the correct ratio.
140280	5 Litre	
140290	15 Litre	



**NON ABRASIVE CRÈME CLEANSER - H12**



CODE	SIZE	DESCRIPTION
140830	1 litre	<b>SHINE</b> Is a powerful creme cleanser specially formulated to clean & shine most hard surfaces such as enamels, tiles, stainless steel & chrome. Areas which Shine would be most advantageous are hard surfaces encountered in a kitchen area. Stains, grease & dirt marks are all quickly and easily removed from most hard surfaces.
140840	5 Litre	

**INDUSTRIAL STRENGTH BLEACH & DISINFECTANT GEL - H13**



CODE	SIZE	DESCRIPTION
141080	1 litre	<b>GEL CHLOR</b> Is a chlorine activated bleach and sanitiser with a pleasant eucalyptus fragrance. Gel Chlor may be used in a number of applications including the following: - Stain removal of kitchen crockery - Bleaching of clothes - Hard surface sanitiser in bathrooms and kitchens - Cleaning and disinfecting of toilets and urinals
141190	5 Litre	



**DUAL ACTION DISINFECTANT AND AIR FRESHENER - H14**



CODE	SIZE	DESCRIPTION
140875	500ml (Bottle only)	<b>CHERRY BLOSSOM</b> Is a dual action cleaner. It is a neutral detergent containing specially formulated perfume oils with a high residual nature which masks obnoxious odours. It is safe to use on all washable surfaces and it is compatible with most floor finishes.
140870	5 Litre	
140880	15 Litre	



**HOSPITAL GRADE DISINFECTANT - H15**



CODE	SIZE	DESCRIPTION
140855	500ml (Bottle only)	<b>MEDIC</b> Is a clear blue coloured liquid that contains a combination of cleaning agents & highly effective quaternary sanitisers, leaving a long lasting floral fragrance. Medic meets TGA and NATA requirements for certification & is a highly active QAC based disinfectant. MEDIC is formulated to clean all hard surfaces & to leave cleaned surfaces germ free.
140850	5 Litre	
140860	15 Litre	



## HAND AND SURFACE SANITISER - H16



CODE	SIZE	DESCRIPTION
141230	750ml	<b>SANI-CLEAN</b> RapidClean Sani-Clean Hand and Surface Sanitiser is an alcohol based sanitiser which kills bacteria within 30 seconds. Unique formula for fast and convenient hand and surface sanitation. Kills 99.9% of germs and is enriched with glycerine, aloe vera extract and vitamin E to protect your skin, leaving your hands soft and smooth.
141245	5 Litre	



## EUCALYPT DISINFECTANT CLEANER - H18



CODE	SIZE	DESCRIPTION
140820	500ml (Bottle only)	<b>EUCALYPT</b> Is a commercial grade disinfectant with built in detergent. It is formulated to clean all washable hard surfaces and to disinfect, providing excellent protection against germs and bacteria. Eucalypt will also work as a room deodoriser. Eucalypt will deodorise the room leaving a pleasant eucalyptus smell.
141210	5 Litre	
141215	15 Litre	



## CRYSTAL PREMIUM GLASS CLEANER - H19



CODE	SIZE	DESCRIPTION
141270	750ml	<b>CRYSTAL</b> Is formulated to be spotless flash drying with anti-fogging properties. No ammonia, Crystal repels dirt and improves gloss. Crystal is safe for use on all glass and metal surfaces. It is fast drying and provides a streak and smear free result.
141275	5 Litre	
141280	15 Litre	



## M.A.C MULTI PURPOSE ACID CLEANER - H20



CODE	SIZE	DESCRIPTION
141235	5 Litre	<b>M.A.C</b> Is a multi purpose acid cleaner that removes cement residues, mineral scale and metal oxide. It also works as a corrosion inhibitor. Ideal to use for exterior cleaning. Suitable for dishwasher descaling and use in food preparation areas. It can also be used for washroom cleaning and it is safe for use in food preparation areas. It can be used as a dishwasher descaler.
141240	15 Litre	



## MOULD N MOSS - H21



CODE	SIZE	DESCRIPTION
141260	750ml	<b>MOULD, MOSS &amp; ALGAE REMOVER</b> Wet and forget with Mould, Moss & Algae Remover. A rinse free concentrated formula which effortlessly removes all moss, mould and algae from painted interior and exterior surfaces.
141265	5 Litre	

## BRIGHT - H22



CODE	SIZE	DESCRIPTION
141250	750ml	<b>STAINLESS STEEL CLEANER &amp; POLISH</b> Bright contains no solvent or silicone and can be used in food preparation areas and on stainless steel. Designed to remove dust, finger prints, oil, light lime and all types of greasy films from surfaces.
141255	5L	



## DISHWASHING LIQUID - K1



CODE	SIZE	DESCRIPTION
140005	1 Litre (Filled)	<b>SUDZEE</b> Is an active multi-purpose dishwashing detergent formulated to cut through baked-on grease. This high sudsing liquid has a pleasant apple fragrance. Recommended for a wide variety of cleaning applications including; pots and pans, dishes, glassware and light duty cleaning tasks on hard surfaces such as floors, walls, benches.
140670	1 Litre (Bottle only)	
140010	5 Litre	
140020	15 Litre	

## FLOOR CLEANER (HEAVY DUTY) - K2



CODE	SIZE	DESCRIPTION
140780	500ml (Bottle only)	<b>TROJAN</b> Is a heavy duty alkaline liquid floor cleaner formulated to cut through built-up grease and kitchen soil. It will strip-away grease on hoods, vents, ovens and kitchen floors.
140030	5 Litre	
140040	15 Litre	

## OVEN & GRILL CLEANER (HEAVY DUTY) - K3



CODE	SIZE	DESCRIPTION
140790	500ml (Bottle only)	<b>GRILL MASTER</b> Is a caustic base foaming alkaline cleaner for ovens, grills, hot plates and deep fryers. It can also be used to clean stainless steel canopies in kitchen environments.
140050	5 Litre	
140060	15 Litre	

## DISHWASHING POWDER (MACHINE) - K4



CODE	SIZE	DESCRIPTION
140070	4kg Bucket	<b>STREAK FREE</b> Machine dishwashing powder with built-in rinse additive, is an oxygen activated detergent powder containing sanitising and anti-bacterial properties for commercial and domestic-style dishwashers.
140080	10kg Bucket	
140090	10kg Bag	

## DISHWASHING DETERGENT (MACHINE) - K5



CODE	SIZE	DESCRIPTION
140100	5 Litre	<b>MACHINE PLUS</b> Is for mechanical washing of glassware, dishes and utensils. Machine Plus is chlorinated, non foaming, grease cutting and emulsifying detergent formulated for use through an automated dispenser providing a total hands free operation.
140110	15 Litre	



## RINSE AID (MACHINE) - K6



CODE	SIZE	DESCRIPTION
140120	5 Litre	<b>RINSE PLUS</b> Is a drying agent which is added to the final rinse water of glass or dish washing machines, by a specially designed feeder or automated dispenser. Reduces drying time and improves the finished appearance. Effective in both soft and hard water, as it contains a water softener and anti-scaling agents.
140130	15 Litre	



## DEGREASER (HEAVY DUTY) - K7



CODE	SIZE	DESCRIPTION
140800	500ml (Bottle only)	<b>EASI-CLEAN</b> Is a caustic based heavy duty degreaser which removes heavy deposits of grease, fat, protein deposits, dirt, oil, from all hard surfaces. Easi-Clean is particularly effective in food plants and kitchens when used as directed.
140140	5 Litre	
140150	15 Litre	



## CLEANING AND SANITISING FOAM - K8



CODE	SIZE	DESCRIPTION
140770	1 Litre (Bottle only)	<b>FOAM CHLOR</b> Is recommended for cleaning and sanitising hard surfaces and removing fat, dirt and grease. Its combination of chlorine and detergent makes it a powerful washroom cleaner and sanitiser. It is also suitable for the cleaning and sanitising of bodily fluids and spills in the child care, health and aged care sectors.
140160	5 Litre	
140170	15 Litre	



## GLASS WASHING DETERGENT (MACHINE) - K9



CODE	SIZE	DESCRIPTION
140180	5 Litre	<b>LIQUID SPARKLE</b> Is a concentrated blend of heavy detergents and speciality solvents combined with water softeners and scale inhibitors to provide maximum cleaning efficiency in all types of glass washing machines.



## SANITISER (RINSE FREE) - K10



CODE	SIZE	DESCRIPTION
140475	500ml (Bottle only)	<b>RINSE FREE SANITISER</b> Is a non-rinse sanitiser with a complex blend of quaternary ammonium compounds. It has superior germicide activity & it's no rinse properties are crucial to a kitchen sanitising program. RFS is used as the final rinse sanitiser at the end of the standard kitchen & food processing cleaning program.
141285	5 Litre	





## R.F.S CONCENTRATE - RINSE FREE SANITISER CONCENTRATE - K11



CODE	SIZE	DESCRIPTION
140475	500ml (Bottle only)	<b>R.F.S CONCENTRATE</b> Is a fragrance free, non rinse sanitiser with a complex blend of quaternary ammonium compounds. R.F.S Concentrate has been formulated for use in food processing areas and all types of surfaces and equipment. It's superior germicide activity & no rinse properties are crucial to a kitchen sanitising program.
141285	5 Litre	

## CONCENTRATED LAUNDRY POWDER - L1



CODE	SIZE	DESCRIPTION
140260	12.5kg Bucket	<b>ECLIPSE</b> Is a low foaming powder suitable for all types of linen (excluding wool) and is recommended for top/front loading machines. It can be used as a pre-soak for heavily soiled laundry prior to washing. Eclipse is Grey Water safe and complies with Australian standards for phosphate content.
140270	15kg Bag	

## CONCENTRATED LAUNDRY LIQUID - L2



CODE	SIZE	DESCRIPTION
140200	5 Litre	<b>EXTREME</b> Contains a floral fragrance to leave clothes smelling fresh. Extreme Concentrated Laundry Liquid effectively removes common stains on all fabrics & is suitable for hot or cold washing. Extreme is Grey Water safe & complies with Australian standards for phosphate content.
140210	15 Litre	

## FABRIC SOFTENER AND CONDITIONER - L3



CODE	SIZE	DESCRIPTION
140220	5 Litre	<b>CUDDLE SOFT</b> Performs two roles in one – softens fabrics whilst eliminating static charge. Recommended for the laundering of towels, bed linen & reduces static cling in polyester & synthetic garments. Leaves fabrics fresh, easy to iron & wrinkle free.
140230	15 Litre	

## LAUNDRY STAIN SOAKER AND SANITISER - L4



CODE	SIZE	DESCRIPTION
140240	4kg Bucket	<b>WONDER</b> Is a multi-purpose stain remover suitable for general purpose laundering of garments, all types of linen (excluding wool). Recommended for hand-washing, & in top and front loader washing machines. Can be used as a pre-soak for heavily soiled laundry & is suitable for whites, coloured & mixed loads.
140250	15kg Bag	

## LAUNDRY

### AQUA WASH PREMIUM LAUNDRY POWDER - L5



CODE	SIZE	DESCRIPTION
141290	5kg Bucket	<b>AQUA WASH</b> is a heavy duty powder with a fresh fragrance. This product has an advanced formula which quickly penetrates soils and improves the whiteness and brightness of fabrics. It also contains softeners and special optical brighteners.
141295	15kg Bucket	

### ULTRA ENZYME ANTIBACTERIAL LAUNDRY POWDER - L6



CODE	SIZE	DESCRIPTION
141300	5kg Bucket	<b>ULTRA ENZYME</b> Is a multi-purpose enzyme powered stain remover suitable for general purpose laundering of garments, all types of linen (excluding wool). Recommended for hand-washing, & in top and front loader washing machines. Can be used as a pre-soak for heavily soiled laundry & is suitable for whites, coloured & mixed loads.
141305	15kg Bucket	

## PERSONAL CARE

### HAND SOAP - PEARL - P1



CODE	SIZE	DESCRIPTION
140560	5 Litre	<b>GENTLE PEARL</b> Is a mild, high performing liquid hand soap with excellent cleaning properties that leaves a pleasant residual fragrance. Gentle can also be applied through most liquid soap dispensers.
140570	15 Litre	

### HAND SOAP - PINK - P1



CODE	SIZE	DESCRIPTION
140585	500ml	<b>GENTLE PINK</b> Is a mild, high performing liquid hand soap with excellent cleaning properties that leaves a pleasant residual fragrance. Gentle can also be applied through most liquid soap dispensers.
140580	5 Litre	
140590	15 Litre	

### ALL IN ONE - HAIR, HAND & BODY WASH - P2



CODE	SIZE	DESCRIPTION
140540	5 Litre	<b>ALL IN ONE</b> Has been formulated to be a safe & pleasant liquid hand cleaner, body wash, & shampoo for any application. It contains skin & hair conditioners with a delicate floral fragrance. Suitable for amenities such as toilets, change rooms & showers, as well as hair dressing salons.
140550	15 Litre	



## HAND SOAP (ANTIBACTERIAL) - P3



CODE	SIZE	DESCRIPTION
140515	500ml	<b>ANTI BAC</b> Is an odourless antibacterial hand cleaner and sanitiser formulated for the use where an efficient mild hand soap is specified. ANTI BAC is a viscous clear blue odourless liquid creating the perfect combination for use in the child care, health and aged care sectors. Suitable for food processing and preparations areas.
140520	5 Litre	
140530	15 Litre	

## FOAM WASH POD - P4



CODE	SIZE	DESCRIPTION
140600	1 Litre (x6 pods)	Is a pleasantly fragranced, pH controlled product for general purpose hand cleaning with a rich, foamy lather and built in moisturisers.

## ANTIBACTERIAL FOAM POD - P5



CODE	SIZE	DESCRIPTION
140610	1 Litre (x6 pods)	Is safe for use in food processing and preparation areas. Perfect for the health care sectors. It is pH balanced, fragrance free with added moisturisers.

## HAIR BODY WASH POD - P6



CODE	SIZE	DESCRIPTION
140620	1 Litre (x6 pods)	Is for use in showers & bathing areas. It has a rich lather to moisturise the skin. Ideal for the child care & health care sectors.

## SANITISING GEL POD - P7



CODE	SIZE	DESCRIPTION
140630	1 Litre (x6 pods)	Is an instant hand sanitiser which kills 99.9% of germs. This no rinse gel is ideal for the child care and health care sectors.

## SOAP DISPENSER - MANUAL



CODE	DESCRIPTION
140640	Features an easy to use large push button operated by either hand or elbow and dispenses a measured amount of product. Suitable for the RapidClean 1L pod or bulk refill soap range.

## BULK REFILL CARTRIDGE



CODE	SIZE	DESCRIPTION
140635	1 Litre (Bottle Only)	Refillable cartridge dispenser for Gentle Soap, Body Wash and Anti Bac Soap.
140641	Nozzel	Foam Pump Green
140642	Nozzel	Gel / Liquid Pump Yellow

## FOAMING HAND SOAP - P8



CODE	SIZE	DESCRIPTION
140900	5 Litre	<b>FOAMY</b> Is a mild, high performing foaming hand soap with excellent cleaning performance and a pleasant fragrance.

## RAPID HAND SANITISER - P9



CODE	SIZE	DESCRIPTION
141200	500ml	<b>SANI-GEL</b> Sani-Gel is an alcohol based hand sanitiser gel which kills bacteria within 30 seconds. Contains Glycerine moisturiser, natural Aloe Vera extract and Vitamin E to soothe, protect and support your skin tone.
141205	5L	

# Automotive Range

Delivering professional cleaning results for vehicles and commercial equipment



## AUTO WASH - A1



CODE	SIZE	DESCRIPTION
140905	5 Litre	<b>CAR, TRUCK &amp; EQUIPMENT WASH</b> A specially formulated detergent/cleaner for removing a wide variety of soils from cars, trucks and general equipment. Formulated to easily remove dirt, road film and exhaust carbon from trucks. Auto Wash is phosphate free.
140910	15 Litre	

## AUTO HD - A2



CODE	SIZE	DESCRIPTION
140920	5 Litre	<b>HEAVY DUTY VEHICLE &amp; EQUIPMENT DEGREASER</b> A versatile heavy duty and general purpose cleaner for truck and car exteriors. It's versatility ranges from medium duty engine, chassis and workshop degreasing to light duty cleaning of interiors and upholstery.
140930	15 Litre	
140925	500ml *Bottle Only	

## AUTO REVIVE - A3



CODE	SIZE	DESCRIPTION
140940	5 Litre	<b>VINYL &amp; DASH REJUVINATOR</b> Designed as a conditioner for vinyl, leather and rubber surfaces. It is suitable for dashboards, trims, tyres and more.
140945	500ml *Bottle Only	

## AUTO WHEEL - A4



CODE	SIZE	DESCRIPTION
140950	5 Litre	<b>MAG WHEEL CLEAN &amp; SHINE</b> Quickly removes brake dust and road grime with slight agitation, leaving your wheels clean and bright. AUTO WHEEL is safe for all types of metal hubcaps including steel or aluminium alloy wheels.
140960	15 Litre	
140955	500ml *Bottle Only	

## AUTO WASH & WAX - A5



CODE	SIZE	DESCRIPTION
140970	5 Litre	<b>FOR CARS, TRUCKS &amp; EQUIPMENT</b> A unique blend of surfactants that will break the bond of deposits with a rich foam holding them in place. For a scratch free, high shine finish, AUTO WASH & WAX includes nano size carnuba wax which provides a protective barrier against UV and adhesion of grime and bugs. Auto Wash & Wax is phosphate free.
140980	15 Litre	

## GRITTY - A6



CODE	SIZE	DESCRIPTION
141220	1 Litre	<b>GRIT BASED HAND SOAP</b> Gritty is an orange liquid with natural sand ore based industrial hand cleaner. Gritty has biodegradable surfactants that remove the toughest of grease, oil, paint and industrial soils, leaving hands sparkling clean.
141225	5 Litre	

# Floorcare Range

Solutions For Complete Hard Floor & Carpet Care



## WATER BASED SEALER FINISH - F1



CODE	SIZE	DESCRIPTION
141000	5 Litre	<b>GLOSS PLUS</b> Is for use on hard floor surfaces including Vinyl, Terrazzo and Timber. Gloss Plus is a clear, non-yellowing, high gloss finish designed to enrich and enhance the natural colours of all types of floors.

## HARD FLOOR CLEANER MAINTAINER - F2



CODE	SIZE	DESCRIPTION
141010	5 Litre	<b>QUICK SHINE</b> Is a multipurpose neutral cleaner and maintainer for use on both sealed and unsealed floors. The blend of waxes and resins used in Quick Shine facilitate easy buffing, increased gloss and increased slip resistance. Quick Shine combines the detergency technology of neutral detergent and a blend of waxes and polishes to protect, replenish and repair floor surfaces.

## HARD FLOOR STRIPPER - F3



CODE	SIZE	DESCRIPTION
141020	5 Litre	<b>QUICK STRIP</b> Is a fast, efficient, labour saving method for removing floor finishes and wax sealers with a minimum of scrubbing. Quick Strip is a low odour, ammonia free, stripping system.

## CARPET PRESpray DETERGENT - F4



CODE	SIZE	DESCRIPTION
141030	5 Litre	<b>CARPET PLUS</b> Is used as a carpet extraction detergent, carpet prespotter, odour suppressor and deodoriser. Offers carpet cleaners so much with the one carpet cleaning product. Offers superior detergency and cleaning performance without the use of alkaline boosters or enzymatic detergents.

## CARPET & UPHOLSTERY DEODORISER & CLEANER - F5



CODE	SIZE	DESCRIPTION
141040	500ml	<b>CARPET FRESH</b> Use Carpet Fresh for neutralising odours due to urine, faeces, vomit and other organic soils. - Contains natural tea tree oil - Will neutralise almost any odour and other organic soils - Ready to use

## CARPET & UPHOLSTERY SPOTTER - F6



CODE	SIZE	DESCRIPTION
141050	750ml	<b>SPOTTY</b> Is a patented stain remover that uses advanced polymer technology to encase soil on carpet fibres. It offers excellent stain and spot removal and is safe for use on most carpet, rug and upholstery fibres. Outstanding re-soiling resistance, combined with low VOCs and its nonhazardous GHS classification makes it tough on stains and gentle on fibres.

## ENCAPSULATING CARPET SHAMPOO - F7



CODE	SIZE	DESCRIPTION
141060	5 Litre	<b>ENCASE</b> Incorporates crystallising polymer technology which enables residual encapsulated soil to be removed from the carpet with subsequent vacuuming. The polymer residue does not attract dirt or soil and helps to ensure the carpet stays cleaner for longer. Contains a gentle and fresh fragrance and allows carpets to be effectively cleaned and returned to use in minimal time. Suitable for use on most carpet fibres.

## HIGHLY CONCENTRATED DEGREASER DETERGENT - F8



CODE	SIZE	DESCRIPTION
141070	5 Litre	<b>TILE CLEAN HD</b> Is a concentrated, heavy duty, alkaline detergent designed for the removal of fats and oils from floors. Rapidly removes carbonised food deposits and heavily congealed fats and greases. Contains sequesterants, builders and a highly efficient detergent system for easy rinsing from all surfaces.



**Highly Acidic**  
Must wear gloves & eye/face protection. Will harm paintwork & metal surfaces. Must be used with caution

# pH Scale Chart



**Highly Alkaline**  
Must wear gloves & eye/face protection. Will harm paintwork & metal surfaces. Must be used with caution



**HIGHLY ACIDIC**

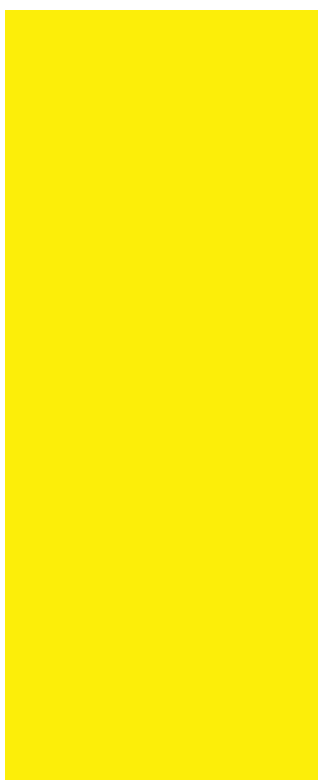
**ACIDIC**

**pH NEUTRAL**

**ALKALINE**

**HIGHLY ALKALINE**

Name	pH
M.A.C	0.3
HI-GENIC	1.5



Name	pH
FOAM ANTIBAC PODS	5
RINSE PLUS	5
BODY WASH	6
CUDDLE SOFT	6
FOAMY	6
FOAM HAIR & BODY PODS	6
FOAM HAND WASH PODS	6
SANI-CLEAN	6
SANI-GEL	6
FOAM HAND SANITISER PODS	6.5
GENTLE PEARL	6.5
GENTLE PINK	6.5
ANTI BAC	7
CRYSTAL	7
NEUTROL	7
RTU MOULD 'N' MOSS (quat)	7
SUDZEE	7
AUTO WASH	7.5
AUTO WASH AND WAX	7.5
GRITTY	7.5
AUTO REVIVE	8
BRIGHT	8

Name	pH
CHERRY BLOSSOM (quat)	9
EUCALYPT (quat)	9
FLORAL (quat)	9
KLEEN ALL	9
LEMON FRESH (quat)	9
MEDIC (quat)	9
RFS CONCENTRATE (quat)	9
RFS RINSE FREE SANITISER (quat)	9
SPRUCE (quat)	9
TUTTI FRUITTI (quat)	9
SHINE	9.5
SPRAY N WIPE	9.5
MOULD 'N' MOSS (quat)	10
REFLECTION	10
AQUA WASH	11
ECLIPSE	11
EXTREME	11
STREAK FREE	11
ULTRA ENZYME	11
WONDER	11

Name	pH
BLEACH 4%	12
ECO CLEAN (quat)	12
AUTO WHEEL	12.5
EASI CLEAN	12.5
LIQUID SPARKLE	12.5
TROJAN	12.5
AUTO HD	13
FOAM CHLOR	13
GEL CHLOR	13
GRILLMASTER	13.5
MACHINE PLUS	13.5

**Applications:**  
Descaling, external concrete and brick, washroom cleaning. Acids are used to remove mineral deposits, rust stains, and hard water deposits.

**Applications:**  
Products are non-hazardous to health and non-damaging to surfaces. Safe for body use, dishwashing, automotive, smooth surfaces and laundry.

**Applications:**  
Effective in removing dirt, grime, and grease from surfaces but are less harsh than highly alkaline cleaning products. Mild alkaline products are used for disinfectants, surface cleaners, laundry.

**Applications:**  
Typically used for heavy-duty cleaning tasks that require the removal of stubborn stains and greasy build-up, such as industrial settings, cleaning ovens and grills and degreasing surfaces.

## IMPORTANT NOTICE

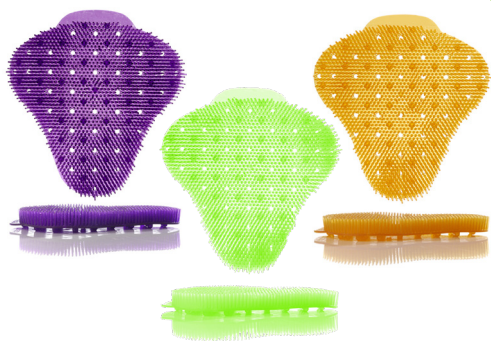
Always refer to product labels and Safety Data Sheets regarding Safety and Handling Information.

**DO NOT** mix quat based cleaners with any other detergents. **NEVER** mix chlorine/bleach with acids (poisonous gas is formed).

## CLEANING ACCESSORIES RANGE

Our RapidClean stores have a huge range of cleaning accessories, with cleaning experts on hand to help with your queries. **To see our full range of cleaning accessories, please visit your local RapidClean Store or [www.rapidclean.com.au](http://www.rapidclean.com.au)**  
The products featured in this catalogue are some of our most popular accessories.

### URINAL SCREEN - 60 DAYS



CODE	COLOUR	SCENT	PK	CTN	DESCRIPTION
44127	Purple	Cherry	2	12	<b>EKOS URINAL SCREEN</b> - Zero splash back from optimal bristle technology - 60 Day performance - Designed for water and waterless urinals - Anti UTI microbes for health sector protection - Fresh scent
44128	Green	Green Apple	2	12	
44129	Orange	Tropical	2	12	

### URINAL SCREEN - 30 DAYS



CODE	COLOUR	SCENT	PK	CTN	DESCRIPTION
BUR626MGOR	Red	Mango Bay	1	10	<b>URINAL SCREEN</b> Two-sided anti-splash texture, preventing splash back and cross contamination of urine to other areas outside the rest room. Extremely flexible to allow proper fit to any urinal contour. Translucent design allows total viewing of the drain to ensure it remains free flowing. Safe for use in waterless urinals.
BUR623MAR	Blue	Mountain	1	10	
BUR621MMR	White	Melon Mist	1	10	
BUR624SBR	Orange	Sunburst	1	10	
BUR622CLR	Green	Calypso Lime	1	10	

### MEASURING JUGS



CODE	SIZE	DESCRIPTION
FJ050CP2	500mL	<b>RAPIDCLEAN POURMAXX JUGS</b> The worlds best measuring jug! Great pouring control, strong handle, raised measuring graduations, non-spilling & manufactured from chemical resistant, food grade polypropylene. Featuring a dilution rate guide on one side & a measuring guide on the other. Dual purpose non-drip spout is designed to allow controlled pouring of thin or thick liquids from a dribble to bulk filling.
FJ100CP2	1L	
FJ200CP2	2L	

### MICROFIBRE CLEANING CLOTH



CODE	COLOUR	SIZE (mm)	CLOTHS (per box)	DESCRIPTION
65151	Red	36 x 36	50	<b>MICROFIBRE CLOTH</b> - High absorption - Microfibre traps dirt and oils - Non linting, washable and reusable - Colour coded to help avoid the risk of cross contamination between different areas
65153	Yellow	36 x 36	50	
65152	Green	36 x 36	50	
65150	Blue	36 x 36	50	



## MICROFIBRE CLEANING CLOTH - 8 PACK



CODE	COLOUR	SIZE (mm)	CLOTHS (per box)	DESCRIPTION
65155	2x Red 2x Blue 2x Green 2x Yellow	36 x 36	14 packs per carton	<b>MICROFIBRE CLOTH</b> - High absorption - Microfibre traps dirt and oils - Non linting, washable and reusable - Colour coded to help avoid the risk of cross contamination between different areas

## MICROFIBRE GLASS CLEANING CLOTH



CODE	COLOUR	SIZE (mm)	CLOTHS (PER BOX)	DESCRIPTION
65154	Purple	36 x 36	50	<b>MICROFIBRE CLOTH</b> - High absorption - Microfibre traps dirt and oils - Non linting, washable and reusable - Specially designed for cleaning glass

## WIPES ON A ROLL (HEAVY DUTY)



CODE	COLOUR	SIZE (mm)	SHEETS (per roll)	ROLLS (per carton)	DESCRIPTION
65101	Red	50 x 30	90	6	<b>WIPES ON A ROLL</b> - 45 Metre roll - Heavy duty - Antibacterial - Superior absorption - Colour coded to assist control of cross contamination
65103	Yellow	50 x 30	90	6	
65102	Green	50 x 30	90	6	
65100	Blue	50 x 30	90	6	

## SCOURER SPONGE (HEAVY DUTY)



CODE	COLOUR	SIZE (mm)	PK	CTN	DESCRIPTION
65000	Green	150 x 100	10	60	<b>SCOURER SPONGE</b> Suitable for all industrial applications including commercial kitchens. Not for use on non-stick cookware or other delicate surfaces.

## RAPID SUPER SCOUR



CODE	COLOUR	GM	PK	CTN	DESCRIPTION
172022	Stainless Steel	50g	1	48	<b>SCOURER</b> Ideal for scrubbing away tough grime from multiple surfaces.

## RAPID SUPER SPONGE



CODE	SIZE	QTY	CTN	DESCRIPTION
172021	Regular	1	6 Boxes of 12	<b>ULTIMATE CLEANING POWER</b> Extraordinary cleaning power in one mighty sponge! Super fine fibres trap and lift tough stains and stubborn grime such as smoke stains, scu marks, water marks and mould. For use on multiple surfaces including aluminium, plastic, glass, ceramics and laminex. For indoor and outdoor use with no chemicals required.
172020	Large	1	12	

## WINDOW CLEANING KIT



CODE	DESCRIPTION
RCWCKG	A semi-professional grade bucket kit. Use this kit to effectively clean windows and leave a streak free finish. <b>KIT INCLUDES:</b> 1 x 12L Green Bucket with Clear Lid 1 x 35cm Washer Cover 1 x 35cm Squeegee Channel & Rubber 1 x Squeegee Handle 1 x Safety Scraper 1 x Green Microfibre Cloth 1 x 35cm "T" Bar Handle 1 x Set of Squeegee Holder Clips (2)

## RAPID SUPER LOBBY PAN SET



CODE	COLOUR	QTY	CTN	DESCRIPTION
172019	Black & Green	1	6	<b>INDUSTRIAL STRENGTH, ERGONOMIC, CORROSION PROTECTION</b> Set has a large L-handle to reduce the strain of carrying. Custom moulded to give the largest pan capacity. Independent, replaceable broom clip easily replaced if damaged. Includes high quality broom. HACCP Certified

## ALUMINIUM HANDLE



CODE	COLOUR	SIZE (mm)	QTY	CTN	DESCRIPTION
B-11582-RB	Blue	1500 x 25	1	12	<b>ALUMINIUM HANDLE</b> Can be fitted to most brooms, squeegees, scrubs and mops. Colour coded handles to help avoid the risk of cross contamination between different areas.
B-11582-RG	Green	1500 x 25	1	12	
B-11582-RR	Red	1500 x 25	1	12	
B-11582-RY	Yellow	1500 x 25	1	12	

## RAPID 400 COTTON MOP HEAD



CODE	COLOUR	GM	QTY	CTN	DESCRIPTION
MH-RP-01B	Blue	400	1	12	<b>MOP HEAD</b> Industrial strength multi-purpose mop ideal for commercial cleaning. This mop is highly absorbent and is colour coded to help avoid the risk of cross contamination between different areas.
MH-RP-01G	Green	400	1	12	
MH-RP-01R	Red	400	1	12	
MH-RP-01Y	Yellow	400	1	12	

## RAPID 350 MICROFIBRE MOP HEAD



CODE	COLOUR	GM	QTY	CTN	DESCRIPTION
RAP350B	Blue	350	1	12	<b>MOP HEAD</b> 100% microfibre fine fibre that can be used wet or dry. Round shape to use with press wringer and looped to prevent tangling. Superior absorbency and machine washable. Available in Blue, Green and Red to eliminate cross contamination
RAP350G	Green	350	1	12	
RAP350R	Red	350	1	12	

## ROLLER WRINGER BUCKET



CODE	COLOUR	SIZE	QTY	CTN	DESCRIPTION
IW-005RB	Blue	15 Litre	1	2	<b>ROLLER WRINGER BUCKET</b> Heavy duty plastic body is lightweight and hygienic with non-slip foot pedal and castors providing greater manoeuvrability.
IW-005RG	Green	15 Litre	1	2	
IW-005RR	Red	15 Litre	1	2	
IW-005RY	Yellow	15 Litre	1	2	

## A-FRAME WET FLOOR SIGN



CODE	COLOUR	QTY	DESCRIPTION
IW-101RP	Yellow	1	<b>A-FRAME WET FLOOR SIGN</b> Unique patented rubber bumpers at all corners to prevent the sign sliding if stepped on when pushed flat on the floor. This lightweight, compact, folding design allows for convenient storage on carts and easy transportation between work areas. Yellow in colour for high visibility.

## JANITORS CART & REPLACEMENT BAG



CODE	COLOUR	QTY	DESCRIPTION
JC-175RP	Blue cart with green bag	1	<b>JANITORS CART</b> Lightweight and sturdy design with provision for many accessories to be hung. Compact size for easy manoeuvrability into elevators and tight passageways.
JA-002RP	Green (Bag only)	1	<b>REPLACEMENT BAG</b> Heavy duty highly visible bag for collecting rubbish or transporting linen.

## KITCHEN TIDY LINERS



CODE	LITRE	SIZE (mm)	QUANTITY	DESCRIPTION
RKTS	18L	540 x 450	20 Rolls of 50	<b>KITCHEN TIDY BAGS</b> - White HDPE - Tear-off roll
RKTM	27L	650 x 510	20 Rolls of 50	
RKTL	36L	700 x 590	20 Rolls of 50	

## ALL PURPOSE GARBAGE BAGS



CODE	LITRE	SIZE (mm)	QUANTITY	DESCRIPTION
RLDBIN73AP	73L	920 x 760	5 Packs of 50	<b>ALL PURPOSE BIN LINERS</b> - Black LDPE - Heavy Duty - Easy Dispense
RLDBIN240AP	240L	1450 x 1140	4 Packs of 25	

## MEDIUM GARBAGE BAGS



CODE	LITRE	SIZE (mm)	QUANTITY	DESCRIPTION
RLDBIN54M	54L	850 x 640	5 Packs of 50	<b>MEDIUM BIN LINERS</b> - Black LDPE - Easy Dispense
RLDBIN73M	73L	920 x 760	5 Packs of 50	

## HEAVY DUTY GARBAGE BAGS



CODE	LITRE	SIZE (mm)	QUANTITY	DESCRIPTION
RLDBIN73H	73L	920 x 760	10 Packs of 25	<b>HEAVY DUTY BIN LINERS</b> - Black LDPE - Easy Dispense
RLDBIN82H	82L	950 x 810	10 Packs of 25	
RLDBIN120H	120L	1100 x 950	4 Packs of 25	
RLDBIN240H	240L	1450 x 1140	4 Packs of 25	<b>HEAVY DUTY BIN LINERS</b> - Black LDPE - Tear-off roll
RLDBIN73RH	73L	900 x 760	10 Rolls of 25	
RLDBIN120RH	120L	1200 x 900	4 Rolls of 25	
RLDBIN240RH	240L	1450 x 1150	4 Rolls of 25	

## EXTRA HEAVY DUTY GARBAGE BAGS



CODE	LITRE	SIZE (mm)	QUANTITY	DESCRIPTION
RLDBIN82E	82L	950 x 810	8 Packs of 25	<b>EXTRA HEAVY DUTY BIN LINERS</b> - Black LDPE - Easy Dispense

VACUUM BAGS



BAG CODE	SUITS VACUUM BRAND / MODEL	MATERIAL	BAGS (Per pack)
AF193	<b>KARCHER</b> T151, T111 <b>NILFISK</b> GD930, GD930S2, PANTHER, GD110, VIKING, DP9000, Z970, <b>PULLMAN</b> 2000GH VOLTA UZ 173, PROFFS: UZ 920...930S, U 945	Paper	5pk
AF210	<b>KERRICK</b> YES/PLAY <b>NILFISK</b> GD872, GD932, GD934, CUBIC GM110-130, S2, <b>NILFISK ADVANCE:</b> UZ876, UZ877, UZ878, UZ934 <b>PULLMAN</b> PC6.0, PC9.0 VOLTA APOLLO UZ872, UZ2932, UZ932-4	Paper	5pk
AF387	<b>NILFISK</b> GA70, GM80, GS80	Paper	5pk
AF388	<b>NILFISK</b> GM200 SERIES – GM200, GM200E, GM210GM300 SERIES – GM300, GM300 SPRING, GM310, GM310 SILVER, GM320, GM330, GM300 KEY ACCOUNT GM400 SERIES – GM400, GM400 TIME, GM400 BRONZE, GM400 SILVER, GM400 GOLD, GM405, GM410, GM415, GM420, GM425,GM430 GM500 KING SERIES – GM500, GM505, GM510, GM511, GM520, GM530, 540	Paper	5pk
RAF390G	<b>RAPIDCLEAN</b> BARREL VACUUM PSP180A <b>NUMATIC</b> CHARLES, HENRY, GEORGE, JAMES, HETTY, JUNIOR, JUNIOR NVH180 & PSP180, RSV130 BACKPACK, RSB140 BACKPACK, NVM-1CH, NVM-2BH, HVR200	Paper	10pk
AF607S	<b>CLEANSTAR</b> Alternative for STARLITE BACKPACK (VBK) <b>HAKO</b> ROCKET VAC (OLD STYLE), SHADOWVAC BACK PACKS <b>NILFISK</b> BACKPACK BV100, BV1100, AA808A ORIGIN BV100 BACKPACK, BV150 BACKPACK, BV200 BACKPACK, SPRINT 850B BACKPACK <b>PACVAC</b> OLDER MODEL PACVACS, PROLITE	Synthetic	10pk
RAF607-10L	<b>CLEANSTAR</b> STARLITE BACKPACK (VBK) <b>HAKO</b> ROCKET VAC (OLD STYLE), SHADOWVAC BACK PACKS <b>HOOVER</b> 844 <b>NILFISK</b> BACKPACK BV100, BV1100, AA808A ORIGIN BV100 BACKPACK, BV150 BACKPACK, BV200 BACKPACK, SPRINT 850B BACKPACK <b>PACVAC</b> OLDER MODEL PACVACS, PROLITE POLIVAC WOMBAT, KOALA BACKPACK	Paper	10pk
RAF924S	<b>RAPIDCLEAN</b> RAPID VAC MKII BACKPACK, RVMKII <b>CLEANSTAR</b> GIBLI T1 BACKPACK <b>CLEANTECH</b> PIGGYVAC BACKPACK (VPIG) <b>KERRICK</b> VH060 BACKPACK, REDBACK BACKPACK	Synthetic	5pk
AF1000-10	<b>PULLMAN</b> AS5 SPITWATER AS5 <b>CLEANSTAR</b> HYPERVAC AS5, VBRO20 (LITTLE BRO) GIBLI AS5 <b>HAKO</b> SUPERVAC 50	Paper	10pk
RAF1022 AF1022S	<b>ALTO</b> SALTIX 10 <b>NILFISK</b> GD910, GD1000, GD1005, GD1010, GDS1010, GD2000, GD1005, GD111, HDS1005, HDS2000, GDP2000, GD911 (battery powered machine), VP300, VC300	Paper Synthetic	5pk
RAF1063	<b>NILFISK</b> GD5, GD10	Paper	5pk
RAF1073	<b>HAKO</b> ROCKET VAC XP (NEW STYLE)	Paper	5pk
RAF-PV AF-PVS	ALL <b>PACVAC</b> SUPERPRO 700 SERIES MODELS (EXCEPT MICRON): - SUPERPRO 700- SUPERPRO DUO 700- SUPERPRO WISPA 700- SUPERPRO TRANS 700- SUPERPRO BATTERY 700	Paper Synthetic	10pk



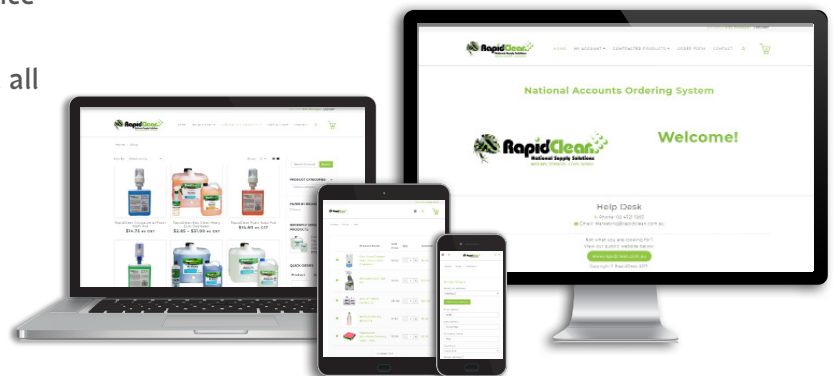
## NATIONAL ACCOUNTS

RapidClean has over 70 stores and we offer our Key Account customers many benefits including centralised billing, improved supply chain management, a bespoke online ordering platform, centralised product range selection and price negotiation relevant to their collated purchases. We invite all customers with multiple delivery points throughout Australia to contact us about the benefits of becoming a RapidClean Key Account.

## FEATURES AND BENEFITS

- One national point of contact
- Improved supply chain
- Select product range at head office level
- Negotiate a price utilising collated buying power
- Convenience of a single account
- Deliveries throughout Australia and New Zealand
- Our products are delivered to you by a RapidClean staff member who knows exactly what's in the box, how it works and how to service it
- Our cleaning supply experts are equipped with the tools, spare parts and resources to service and repair equipment
- Competitive pricing and fast turnaround on all repairs and services
- There is a RapidClean store in every state, throughout Australia and New Zealand
- Complete support material packages
- Online training courses
- State of the art online ordering platform

**RapidNet**   
Online Ordering Portal



## INDUSTRIES WE SPECIALISE IN:

- Building Service Contractors
- Facility Management
- Healthcare
- Child Care
- Aged Care
- Automotive
- Hospitality
- Agriculture



## CLEANING EQUIPMENT RANGE

Our RapidClean stores supply and service a huge range of cleaning equipment including pressure washers, vacuums, floor polishers, sweepers, scrubbers and more. Our stores have cleaning experts on hand to help with all your queries.

To see our full range of cleaning machines, please visit your local RapidClean Store or [www.rapidclean.com.au](http://www.rapidclean.com.au)

The products featured in this catalogue are some of our most popular cleaning machines.

### RC1 COMMERCIAL COMPACT BATTERY SCRUBBER



CODE	DESCRIPTION
RC1CCS 01	<p><b>ERGONOMIC   COMMERCIALY DESIGNED   COMPACT</b>  <b>The future of Rapid Scrubbing is here</b></p> <p>The RapidClean RC1 Scrubber has a 360° swivel point for exceptional manoeuvrability and control, fitted with a heavy duty by-pass vacuum motor providing effortless cleaning in all applications. RC1's smart mounted dashboard clearly displays power and battery usage and allows you to independently control water, vacuum and speed settings.</p>

#### SPECIFICATIONS & FEATURES

<b>Operating Width:</b>	500mm	<b>Brush pressure:</b>	28kg
<b>Theoretical Performance:</b>	1750m <sup>2</sup> ph	<b>brush/pad width:</b>	2 x 250mm
<b>Practical performance:</b>	1000-1200m <sup>2</sup> ph	<b>Total Weight:</b> (inc liquid & accessories)	31kg
<b>Speed Control On Dash:</b>	0 – 3.5km ph	<b>Nett Weight:</b> (machine only)	23kg
<b>Run Time:</b> (Depending on speed setting)	75-80 minutes (Depending on floor surface)	<b>Solution Tank:</b>	3L
<b>Charge Time:</b> (On Board Charging)	5h (Standard) OR Fast 2h charger	<b>Recovery Tank:</b>	3.5L
<b>Battery</b>	1 x Lithium Ion 1200-1500 Cycles (behind Tank)	<b>Tanks</b>	Rotor moulded heavy durable
<b>Vacuum Motor Power:</b>	150W By-Pass 20,000Rpm	<b>On board storage:</b>	Spray/Drink Bottle holder
<b>Brush Motor Power:</b>	2 x 250W	<b>Dimensions:</b>	1125 x 560 x 345mm
<b>Brush Speed:</b>	0-330 Rpm	<b>Warranty:</b>	1 Year (Body, Brush motors, Vacuum Motors, Battery & Charger)

#### INCLUDED ACCESSORIES

- RC1 Scrubber
- 1 x Battery (10050011)
- 1 x 5 Hr Charger (Or the choice of fast charger package) (10050027)
- 2 x Medium Brushes (10080036)
- 2 x Pad Holders (10080033)

#### BRUSHES

Brush	Colour	Floor Type	Code
Soft brush	White	Smooth, slightly polluted floor	10080034
Medium hard brush	Green	Smooth, Normal cleaning, floor	10080036
Hard brush	Black	Generally smooth, Heavy Duty	10080037

#### SUITIBLE FOR USE ON

Tile	Vinyl	Poly	Hard wood	Painted	Concrete	Terrazzo	Rubber Non Slip
✓✓✓	✓✓	✓✓	✓✓	✓✓	✓	✓	✗



Smart dashboard designed for ease of use



On board spray or water bottle storage



Compact fold up design for transport & storage



Magnetic click-on brush/pad system

## RAPID VAC MKVII BACKPACK VACUUM



**CODE**

RVMKII



**DESCRIPTION**

This Backpack vacuum is **Powerful** with its 1450 Watt Motor, **Light** weighing only 4.7kg and **Quiet** at 60 dbA. Featuring a new, modern design and a comfortable padded 3-strap harness support system you will love our backpack!

**SPECIFICATIONS & FEATURES**

- **1450W** Powerful Motor
- **Lightweight:** 4.7kg
- H14 HEPA Filtration
- 5 Level Filtration System
- **Quiet** Operation: 60 dbA
- Strong Harness Assembly
- Carry handle
- **51 Litres P/Sec** Airflow Rate
- Cable Restraint Assembly
- Exhaust Deflector
- Motor Thermal Protection
- Switchable Left & Right Hand **Clear Lid**

- **Comfortable** Padded 3-Strap Support System
- Short IEC Lead
- **Premium** 20m Orange Lead
- 6 Litre Cloth Filter Bag with metal reinforced ring
- **Wessel-Werk** Low Profile Floor Tool
- 2 - piece Aluminium Extension Rods
- Black 1.2m Long Vacuum Hose
- Crevice Tool, Dusting Brush, Upholstery Brush and Caddy
- **Warranty:**  
Body: 12 months | Motor: 2 Years



## CONTRACT PRO BACKPACK VACUUM



**CODE**

CONPRO

**DESCRIPTION**

Contract Pro provides strong suction power driven by the 1300W motor high productivity when deep cleaning in medium scale commercial environments. The hi-flow filtration and sealed disposable SMS dust bag offers the 4th level of filtration, improving air quality after use.

**SPECIFICATIONS & FEATURES**

- 1300W Flow Through Motor
- Lightweight: 4.8kg
- 4 Stage Filtration
- High flow filter
- Noise level (at 1.5m) 66dB(A)
- 55 Litres P/ Sec Airflow Rate
- Capacity 5L
- Ergo Padded Harness + Waist Band
- Cable restraint
- Short IEC Lead
- Premium 18M Orange Extension Lead
- 2 Year Body and Motor Warranty

**INCLUDED ACCESSORIES**

- Screw fit hose 1.2m - HOA017
- Plastic 2 piece wand - WND003
- Extension lead 18m - EXL001
- 5L SMS reusable bag - DUB023
- 5L SMS bag disposable (10pk) - DUB036
- Hi-Flow filter - FIL002
- Cord restraint - COR004
- Harness shoulder strap - STP003
- Floor tool 285mm - FLT002
- Crevice tool 32mm - ACC002





## RAPIDCLEAN BARREL VACUUM



CODE	DESCRIPTION
------	-------------

PSP180-G	<p>Compact professional plugged vacuum. HepaFlo filtration not only raises performance standards, but also provides for clean and convenient emptying when full. The Nuplug system allows for quick and simple cable replacement.</p> <ul style="list-style-type: none"> <li>• Compact whilst offering professional 8L capacity</li> <li>• Nuplug, cable replacement is quick and easy</li> <li>• Easy reach, 10 metre cable</li> <li>• TriTex filtration system improves filtration, cleanliness and capacity</li> <li>• Convenient, on-board wand and floor-tool storage</li> <li>• Easy to change HepaFlo bags</li> <li>• A tool for every job, full accessory kit with lightweight aluminium tube set</li> <li>• Energy efficient, A rated</li> </ul>
----------	---



SPECIFICATIONS	ACCESSORIES
----------------	-------------

<p><b>Vacuum Motor Power:</b> 620W  <b>Motor only Airflow:</b> 48 Litres/sec  <b>Bag Size:</b> 8 litres  <b>Cleaning Range:</b> 26.8m  <b>Weight:</b> 7.6kg  <b>Noise Level:</b> 72dB(A)  <b>Warranty:</b> 2 year                      (not including consumable parts)</p>	<ul style="list-style-type: none"> <li>x 2 601024 - Aluminium Extension Tube (32mm)</li> <li>x 1 601025 - Aluminium Tube Bend with Volume Control (32mm)</li> <li>x 1 601729 - 300mm "Wand Dock" Combination Floor Nozzle</li> <li>x 1 601144 - 65mm Soft Dusting Brush (32mm)</li> <li>x 1 601142 - 240mm Crevice Tool (32mm)</li> <li>x 1 601147 - 150mm Upholstery Nozzle Including Slide On Brush (32mm)</li> </ul>
---	---

## GLIDE 300 CANISTER VACUUM



CODE	DESCRIPTION
------	-------------

GLIDE300H	<p>Glide 300 is a great pull-along option for commercial and domestic environments that require regular, detailed cleaning. With a 15L capacity, you're free to clean large areas without having to empty the dust bag, ultimately increasing productivity.</p> <p>You'll be impressed with the suction on this canister vacuum driven by its 1300W motor, and a pressure relief valve to protect the motor, keeping you cleaning for longer!</p>
-----------	---

SPECIFICATIONS	INCLUDED ACCESSORIES
----------------	----------------------

<ul style="list-style-type: none"> <li>• 1300W single-stage flow through</li> <li>• Noise level (at 1.5m) 64dB(A)</li> <li>• 52 Litres P/ Sec Airflow Rate</li> <li>• Lightweight 5kg</li> <li>• Capacity 15L</li> <li>• Reusable 15L SMS Dust Bag</li> <li>• 18m Power Cord</li> <li>• 3-stage filtration</li> <li>• 2 Year Body and Motor Warranty</li> </ul>	<ul style="list-style-type: none"> <li>• Paper DB Disposable 15L - DUB031</li> <li>• Pre-motor Filter - FIL005</li> <li>• Screw Fit Hose 2m - HOA013</li> <li>• Chrome 2 Piece Wand - WND002</li> <li>• SMS DB Reusable 15L - DUB009</li> <li>• Floor Tool 285mm - FLT001</li> <li>• Dusting Brush 32mm - ACC001</li> <li>• Crevice Tool 32mm - ACC002</li> <li>• Upholstery Tool 32mm - ACC003</li> </ul>
---	--





## IMAGE GUEST AMENITIES

### IMAGE SHAMPOO



CODE	SIZE	DESCRIPTION
PL-IM-A20	20ml	1 Ctn (400 x 20ml)

### IMAGE CONDITIONER



CODE	SIZE	DESCRIPTION
PL-IM-B20	20ml	1 Ctn (400 x 20ml)

### IMAGE SHOWER GEL



CODE	SIZE	DESCRIPTION
PL-IM-C20	20ml	1 Ctn (400 x 20ml)

### IMAGE BODY LOTION



CODE	SIZE	DESCRIPTION
PL-IM-D20	20ml	1 Ctn (400 x 20ml)

### IMAGE CONDITIONING SHAMPOO



CODE	SIZE	DESCRIPTION
PL-IM-AB20	20ml	1 Ctn (400 x 20ml)

### IMAGE SOAP PLEAT WRAP & SACHET



CODE	SIZE	DESCRIPTION
PL-IM-S15	15g	1 Ctn (500 x 15g)
PL-IM-S20	20g	1 Ctn (500 x 20g)
PL-IM-S40	40g	1 Ctn (250 x 40g)

### IMAGE TOILET TISSUE 400 SHEET



077560

#### DESCRIPTION

2 Ply (400 sheets)  
11cm x 10cm sheet  
48 Rolls per carton  
Australian Made and Owned  
Individually wrapped toilet rolls  
Large sheets with embossed edges

### IMAGE TOILET TISSUE 700 SHEET



077525

#### DESCRIPTION

- 2 Ply (700 sheets)  
- 11cm x 10cm sheet  
- 48 Rolls per carton  
- Australian Made and Owned  
- Individually wrapped toilet rolls  
- Large sheets with embossed edges

### IMAGE FACIAL TISSUES



081130

#### DESCRIPTION

- 2 Ply, 100 sheets  
- 19cm x 19cm sheet  
- 48 Packs per carton  
- Australian Made and Owned

### SILVER ACCESSORIES



AA-SR-1B

AA-SR-2B

#### DESCRIPTION

1 Ctn (500)



## ENTICE GUEST AMENITIES

### ENTICE SHAMPOO



CODE	SIZE	DESCRIPTION
PL-ENT-A15	15ml	1 Ctn (400 x 15ml)
PL-ENT-A30	30ml	1 Ctn (300 x 30ml)

### ENTICE CONDITIONER



CODE	SIZE	DESCRIPTION
PL-ENT-B15	15ml	1 Ctn (400 x 15ml)
PL-ENT-B30	30ml	1 Ctn (300 x 30ml)

### ENTICE SHOWER GEL



CODE	SIZE	DESCRIPTION
PL-ENT-C15	15ml	1 Ctn (400 x 15ml)
PL-ENT-C30	30ml	1 Ctn (300 x 30ml)

### ENTICE BODY LOTION



CODE	SIZE	DESCRIPTION
PL-ENT-D15	15ml	1 Ctn (400 x 15ml)
PL-ENT-D30	30ml	1 Ctn (300 x 30ml)

### ENTICE CONDITIONING SHAMPOO



CODE	SIZE	DESCRIPTION
PL-ENT-AB15	15ml	1 Ctn (400 x 15ml)
PL-ENT-AB30	30ml	1 Ctn (300 x 30ml)

### ENTICE SOAP PLEAT WRAP & SACHET



CODE	SIZE	DESCRIPTION
PL-ENT-S15	15g	1 Ctn (500 x 15g)
PL-ENT-S20	20g	1 Ctn (500 x 20g)
PL-ENT-S40	40g	1 Ctn (250 x 40g)

### ENTICE TOILET TISSUE 400 SHEET



000400

#### DESCRIPTION

- 2 Ply (400 sheets)
- 9.5cm x 10cm sheet
- 48 Rolls per carton
- Individually wrapped toilet rolls
- Affordable embossed toilet tissue

### ENTICE TOILET TISSUE 700 SHEET



000700

#### DESCRIPTION

- 2 Ply (700 sheets)
- 9.5cm x 10cm sheet
- 48 Rolls per carton
- Individually wrapped toilet rolls
- Affordable embossed toilet tissue

### ENTICE FACIAL TISSUES



000420

#### DESCRIPTION

- 2 Ply, 100 sheets
- 20cm x 19cm sheet
- 48 Packs per carton



# STORE LOCATIONS

sales@rapidclean.com.au  
www.rapidclean.com.au

Rapid Group  
Co-operative Ltd  
ABN: 70 065 227 312



NSW			
ABCOE Distributors	Penrith	02 4725 1200	www.abcoe.com.au
B.I.G Hospitality Warehouse	Port Macquarie	02 6581 1033	www.bighospitality.com.au
Central West Distributors	Dubbo	02 6884 4034	www.rapidclean.com.au
Cleaners Warehouse	Marrickville	02 9660 5000	www.cleanerswarehouse.com
Never 2 Clean	Seven Hills	1800 622 669	www.never2clean.com.au
RapidClean Central Coast	Tuggerah	02 4353 3393	www.rapidcleancentralcoast.com.au
RapidClean Coffs Harbour	Coffs Harbour	02 6652 3544	www.rapidcleancoffs.com.au
RapidClean Griffith	Griffith	02 6964 5755	www.rapidg.com.au
RapidClean Illawarra	Shellharbour	02 4227 2833	www.rapidsupplies.com.au
RapidClean New England	Armidale	02 6772 7088	www.rapidcleannewengland.com.au
RapidClean Newcastle	Mayfield West	02 4908 2333	www.rapidcleannewcastle.com.au
RapidClean Tamworth	Taminda	02 6762 5433	www.rapidcleantamworth.com.au
RapidClean Wagga Wagga	Wagga Wagga	02 6925 0621	www.rapidg.com.au
RapidClean South Coast NSW	Moruya	02 4474 4455	www.rapidcleansouthcoastnsw.com.au
RapidClean Byron Coast	Alstonville	02 6621 2478	www.schygiene.com.au
ACT			
Dowlings Canberra	Fyshwick	02 6280 6599	www.dowlings.com.au
RapidClean DRB	Fyshwick	02 6280 6992	www.rapidcleandr.com.au
QLD			
Australian Chemicals	Townsville	07 4779 8669	www.austchems.com.au
Bundaberg Cleaning Supplies	Bundaberg	07 4151 7608	www.bundabergcleaningsupplies.com.au
CleanX Cleaning Supplies	Brendale	07 3339 1560	www.cleanx.com.au
JJ Cleaning Supplies	Acacia Ridge	07 3344 6679	www.jjcleaningsupplies.com.au
JNL RapidClean	Toowoomba	07 4638 2733	www.jnlrapidclean.com.au
Lindsey's Cleaning Supplies	Bowen Hills	07 3216 0001	www.lindseys.com.au
Morrison CQ Agencies	North Rockhampton	07 4926 2099	www.mcqagencies.com.au
NQ Cleaning & Paints	Mackay	07 4951 3988	www.nqcp.com.au
RapidClean Gold Coast	Ashmore	07 5572 2284	www.rapidcleangoldcoast.com.au
The Supply Guys	Noosaville	07 5449 0155	www.thesupplyguys.com.au
Torquay Supply	Hervey Bay	07 4125 2211	www.torquaysupply.com.au
Ultimate Cleaning Products NQ	Cairns	07 4035 1162	www.ultimatecleaning.com.au
Whereabout Supply	Morningside	07 3902 0900	www.whereaboutsupply.com.au
VIC			
Agrade Cleaning Supplies	Ravenhall	03 9363 4200	www.agradecleaningsupplies.com.au
Cleaners World Gippsland	Traralgon	03 5176 2000	www.cleanersworld.com.au
Concept Cleaning Supplies	Wendouree/Ballarat	03 5339 2025	www.conceptcleaningsupplies.com.au
Coolas Cleaning Supplies	Bendigo	03 5441 7750	www.coolascleaningsupplies.com.au
Eastpoint Cleaning Supplies	Wantirna South	03 9801 8940	www.eastpointcleaningsupplies.com.au
Kleenmart Cleaning Supplies	Shepparton	03 5822 2727	www.kleenmart.com.au
Melbourne Cleaning Supplies	Mt Waverley	03 9880 7333	www.melbournecleaningsupplies.com.au
Mildura One Stop Wholesalers	Mildura	03 5023 1700	www.onestopwholesaler.com
RapidClean Geelong	Newtown	03 5248 2660	www.rapidcleangeelong.com.au
Riverina Cleaning Supplies	Wodonga	02 6024 3914	www.kleenmart.com.au
Victorian Cleaning Supplies	Fairfield	03 9499 1002	www.victoriancleaningsupplies.com.au
TAS			
RapidClean Tasmania	Launceston & Hobart	03 6326 9222	www.rapidcleantas.com.au
SA			
EP Cleaning Supplies	Port Lincoln	08 8683 0707	www.epcleaningsupplies.com.au
Floormaster	Greenacres	08 8369 1883	www.floormaster.com.au
Floormaster	Elizabeth	08 7077 5000	www.floormaster.com.au
Floormaster	Edwardstown	08 8253 7348	www.floormaster.com.au
Westcoast Cleaning Supplies	Whyalla	08 8645 2503	www.rapidclean.com.au
Absorb	Wingfield	08 8239 1611	www.absorb.com.au
WA			
CleanPak Total Solutions	Geraldton	08 9921 7077	www.cleanpak.com.au
Down South Wholesale	Margaret River	08 9759 9157	www.downsouthwholesale.com.au
Lorraine Distributors	Albany	08 9841 4699	www.rapidclean.com.au
MBL Food & Packaging	Canning Vale	08 9334 9600	www.mbl.com.au
PFI Supplies	Bunbury	08 9791 4558	www.pfisupplies.com.au
PowerVac	Osborne Park	08 9242 4751	www.powervac.com.au
South Coast Food Service	Esperance	08 9072 1062	www.southcoastfoods.com.au
The Goods	Rivervale	08 9200 3438	www.thegoods.com.au
RapidClean Kimberley	Broome	08 9192 6318	www.rapidcleannorthwestwa.com.au
NT			
Principal Products	Alice Springs	08 8952 1138	www.principalproducts.com.au
RapidClean NT	Darwin	08 8947 0590	www.rapidclean.com.au